

TYPE PDB

Features

- Multiple taps
- Valox* insulating base
- Clear cover
- UL 1059 Recognized 90° C 600 Volts and is CSA Certified
- Electro-tin plated
- Manufactured from high strength 6061-T6 aluminum alloy

Benefits

- Three different connector configurations provide a wide range of tapping capabilities for up to four primary conductors
- Provides a high degree of impact resistance with superior insulating qualities
- Permits visual inspection
- Ensures reliability
- Provides low contact resistance
- Suitable for use with either copper or aluminum conductors



Fig. 1



Fig. 2



Fig. 3



Fig. 4

Catalog Number	Figure Number	Connector		Primary		Secondary		Ampere Rating Per Pole	Number of Poles	Block Size	Hex Size	
		Primary	Secondary	Wire Range	Openings Per Pole	Wire Range	Openings Per Pole				Primary	Secondary
PDB-428-500-1	1			500kcmil-4	4	4-14	28	1520	1	W	3/8	Slot
PDB-49-500-1	2			500kcmil-4	4	350kcmil-6 4/0-6	6 3	1520	1	W	3/8	3/8 5/16
‡ PDB-55-500-1	4			500kcmil-3/0	5	500kcmil-3/0	5	1600	1	W	3/8	3/8
PDB-412-500-1	3			500kcmil-4	4	4/0-6	12	1520	1	W	3/8	5/16

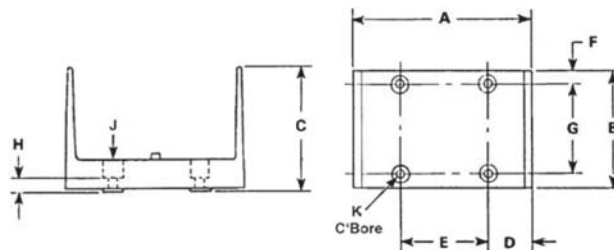
All wire sizes, unless noted otherwise, are American Wire Gauge (AWG)

Valox® is a registered trade name of the General Electric Company.

° A versatile tap hole, wire range 8-14 AWG included on the connector.

‡ Not CSA Certified

Tested to UL 1059, UL File E84782



Block Size	No. of Poles	Dimensions									
		A	B	C	D	E	F	G	H	J	K
W	1	6-7/32	4	4-3/8	1-19/32	3	3/8	3-1/8	7/16	9/32	9/16